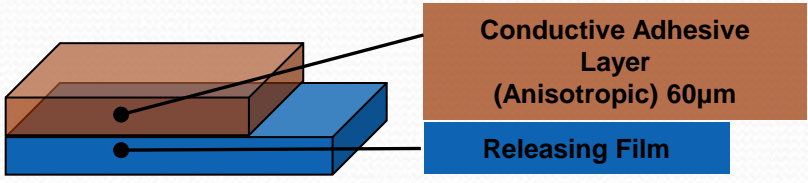


# 导电胶膜

## Conductive Adhesive Film

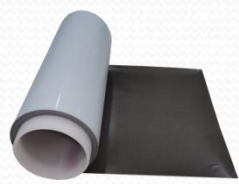
### ◆ 产品叠构 Product Structure



### ◆ 产品实例 Product Samples



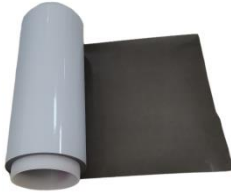
CAF200-W



CAF300

### ◆ 产品特点 Product Feature

- 低吸水率 Low moisture absorption
- 高导通性及信赖性 High reliability and conductivity
- 优异耐热性能 Excellent heat resistance
- 优异储存性 Long shelf-life
- 高剥离力 Good peel strength
- 自主研发 Design and research independently



CAF300-T

※小孔径  
(0.4~0.8mm)  
导通性佳  
(开发中)

### ◆ 产品特性 Characteristics

检验项目 Test Items		测试条件 Condition of Testing	单位 Units	产品Product			测试方法 Test Method
				CAF200-W	CAF300	CAF300-T	
厚度 (Thickness)	Conductive adhesive layer	25±5℃ 40-70%RH	µm	60±10%	60±10%	60±10%	APLUS SPEC
剥离强度 (Peel strength)		SUS/PI	kgf/cm	≥1.0	≥1.0	≥1.0	IPC-TM-650 2.4.9
		SUS/Cu		≥1.0	≥1.0	≥1.0	
		SUS/Ink		≥1.0	≥1.0	≥1.0	
		SUS/Au		≥1.0	≥1.0	≥1.0	
焊锡耐热性 (Soldering resistance)		10 seconds at 288℃	-	PASS	PASS	PASS	IPC-TM-650 2.4.13
吸水率(Water absorption)		25℃, 24hr, water immersion	%	0.11	0.13	0.12	IPC-TM-650 2.6.2D
耐化性 (Chemical resistance)		IPA/MEK/ HCl / NaOH	%	≤20	≤20	≤20	IPC-TM-650 2.3.2
溢胶量 (Resin flow)		25±5℃ 40-70%RH	mm	≤0.20	≤0.15	≤0.15	IPC-TM-650 2.3.17.1
连接电阻 (铜片-电极) (Contact resistance)		25±5℃ 40-70%RH	Ω	≤1.0	≤1.0	<1.0	APLUS SPEC
耐燃性 (Flame class)		-	-	IR	VTM-0	申请中	UL 94
储存期限 (Shelf life)		≤10℃ 40-70%RH	month	4 months in the original producing			APLUS SPEC

\*所有数据为测试代表值 All data are representative value and not guarantee.