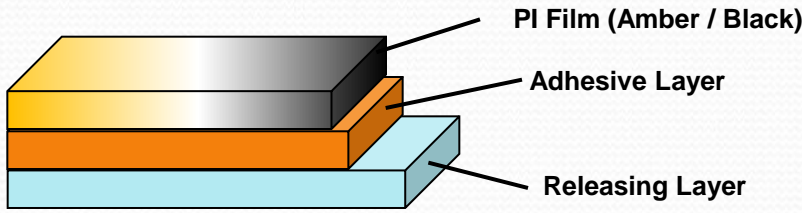


# 耐离子迁移覆盖膜

## Anti-ion Migration Overlay

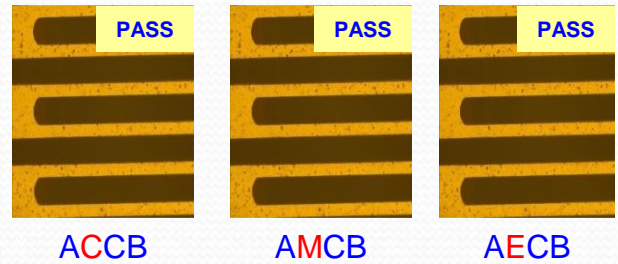
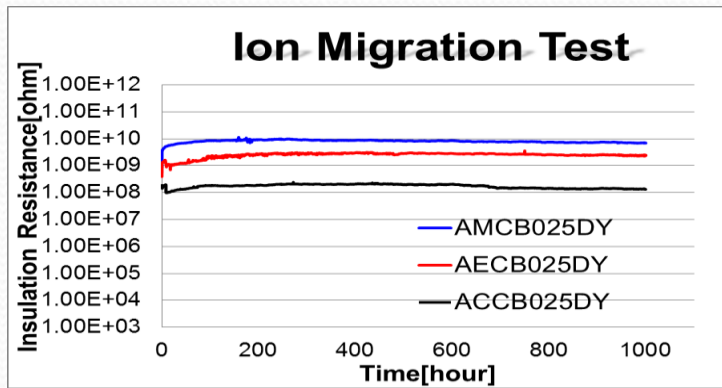
### ◆ 产品叠构 Product Structure



### ◆ 产品特点 Product Feature

- 卓越的离子迁移特性 Outstanding performance of ion migration
- 自主研发 Design and research independently

L/S:50/25um ; Test condition:85°C / 85%RH ; Bias:50V ; 1000hours



### ◆ 产品特性 Characteristics

检验项目 Test Items	测试条件 Condition of Testing	单位 Units	产品 Product			测试方法 Test Method
			ACCB025DY	AMCB025DY	AECB025DY	
厚度 (Thickness)	A	μm	37.5±10%	37.5±10%	37.5±10%	APLUS SPEC
溢胶量 (Resin flow)	A	mm	≤0.20	≤0.20	≤0.20	IPC-TM-650 2.3.17.1
离形力 (Releasing force)	A	g/5cm	≤40	≤40	≤40	APLUS SPEC
剥离强度 (Peel strength)	A	kgf/cm	≥1.0	≥1.0	≥1.0	IPC-TM-650 2.4.9
焊锡耐热性 (Solder resistance)	10 Seconds at 288°C	-	PASS	PASS	PASS	IPC-TM-650 2.4.13
尺寸安定性 (Dimensional stability)	A	%	MD±0.15 TD±0.15	MD±0.15 TD±0.15	MD±0.15 TD±0.15	IPC-TM-650 2.2.4
耐化性 (Chemical resistance)	IPA/MEK/2M HCl/ 2M NaOH	%	≤20	≤20	≤20	IPC-TM-650 2.3.2
储存期限 (Shelf life)	≤10°C 40-70%RH	month	3 months in the original producing			APLUS SPEC

\*所有数据为测试代表值 All data are representative value and not guarantee.